

## HAVE YOU SEEN THIS INSECT?

### Asian Citrus Psyllid



Eggs tucked inside new citrus flush



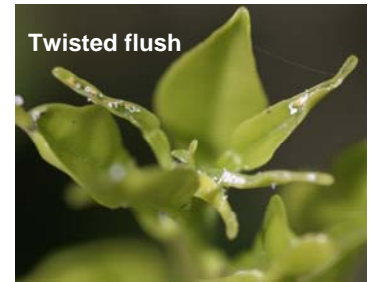
Adult psyllid - 1/8 inch in size



Young stages with waxy tubules



Psyllids infesting a leaf



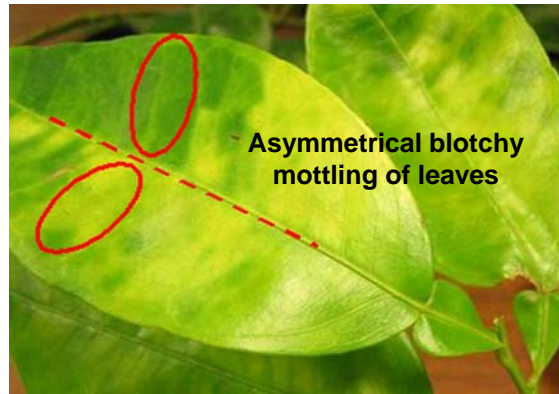
Twisted flush

The Asian citrus psyllid, *Diaphorina citri*, is a small, aphid-like insect. It feeds on the new flush of citrus and very closely related plants such as orange jasmine (*Murraya paniculata*). Psyllid feeding causes burned tips and twisting of the new leaves. More importantly, it can spread the bacterium that causes Huanglongbing disease. This pest has recently been found in southern California, and infests citrus in Florida, Georgia, Louisiana, S. Carolina, Texas, Arizona, Hawaii and Mexico. It is very important that you do not bring plants from other states or countries into California to avoid introducing pests like these.

## HAVE YOU SEEN THIS CITRUS DISEASE? Huanglongbing or Citrus Greening Disease



Lopsided bitter, hard fruit with small dark aborted seeds



Asymmetrical blotchy mottling of leaves



Yellow shoots

Huanglongbing (HLB), also known as citrus greening disease or yellow shoot disease, is a very destructive bacterial disease of citrus and closely related plants. It is spread by psyllids and through grafting with infected budwood. Symptoms include yellow shoots, blotchy leaf mottle, small lopsided fruits and juice with bitter flavor. Diseased trees stop producing fruit and must be removed and destroyed to prevent further spread of the disease. HLB is a serious threat to all citrus trees. This disease is not yet found in California, but it is infecting trees in Mexico, Florida, Louisiana, S. Carolina and Georgia.

It is very important that you plant only disease-free certified citrus to avoid introducing diseases such as this.

**IF YOU SUSPECT YOU HAVE SEEN THIS INSECT OR DISEASE CALL THE CALIFORNIA DEPARTMENT OF FOOD AND AGRICULTURE: 1-800-491-1899**

**For more information: [www.CaliforniaCitrusThreat.org](http://www.CaliforniaCitrusThreat.org)**

*E. Grafton-Cardwell and G. Vidalakis, University of California Riverside*

*Photos by M. Rogers and M. Keremane*

*Funding provided by the USDA CSREES E-IPM Program*

